

# Christmas Treasure Hunt



This Christmas treasure hunt is for children **from six to twelve years** and can easily be set up at home in only a few minutes. The kids start with the first puzzle under the Christmas tree and are then lead from one place to another. The last puzzle leads back to the Christmas tree.\*

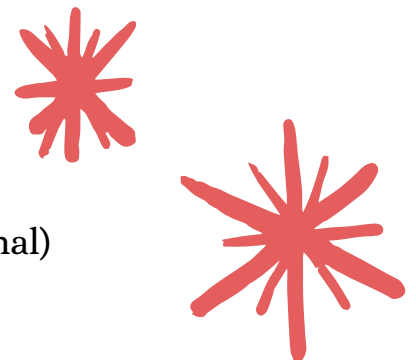
**A** and **B** stand for the **level of difficulty** of the puzzles. We recommend A for children from 9-12 years and B for children from 6-8 years. The versions can also be mixed individually if one level of difficulty seems too easy/hard;  
f.e.: 1. puzzle 1A (hard), 2. puzzle 2B (easy)

**Duration of the treasure hunt:** about 10-20 minutes

**Preparation time:** 5-10 minutes

## **Preparation:**

- 1) Print out the puzzles
- 2) Cut out puzzle number 6 correctly
- 3) Fold the puzzles and put them into envelopes (optional)
- 4) Hide the puzzles in the right places (see below)
- 5) Have fun !



## **List of puzzles and where to hide them:**

Puzzle 1: **Under the Christmas tree**

Puzzle 2: **Fridge**

Puzzle 3: **Washing Machine**

Puzzle 4: **Oven**

Puzzle 5: **Bed**

Puzzle 6: **Post Box**



\*Put a present under the Christmas tree while children are solving puzzles (they shouldn't notice ;)).

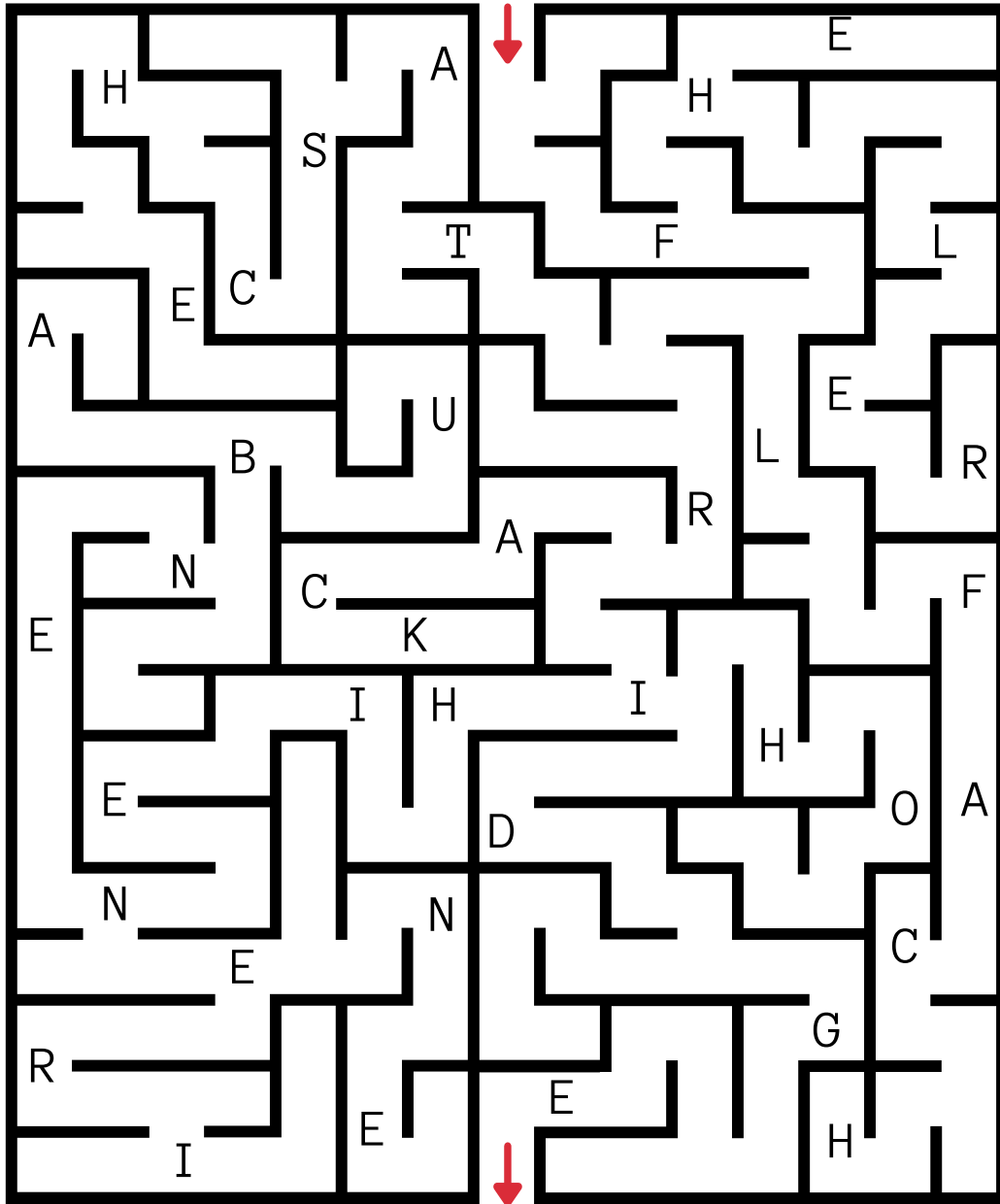


# 1B

The Christmas Angel needs your help! While flying through a wild snowstorm it dropped your present. Follow the clues from one place to another and find it!

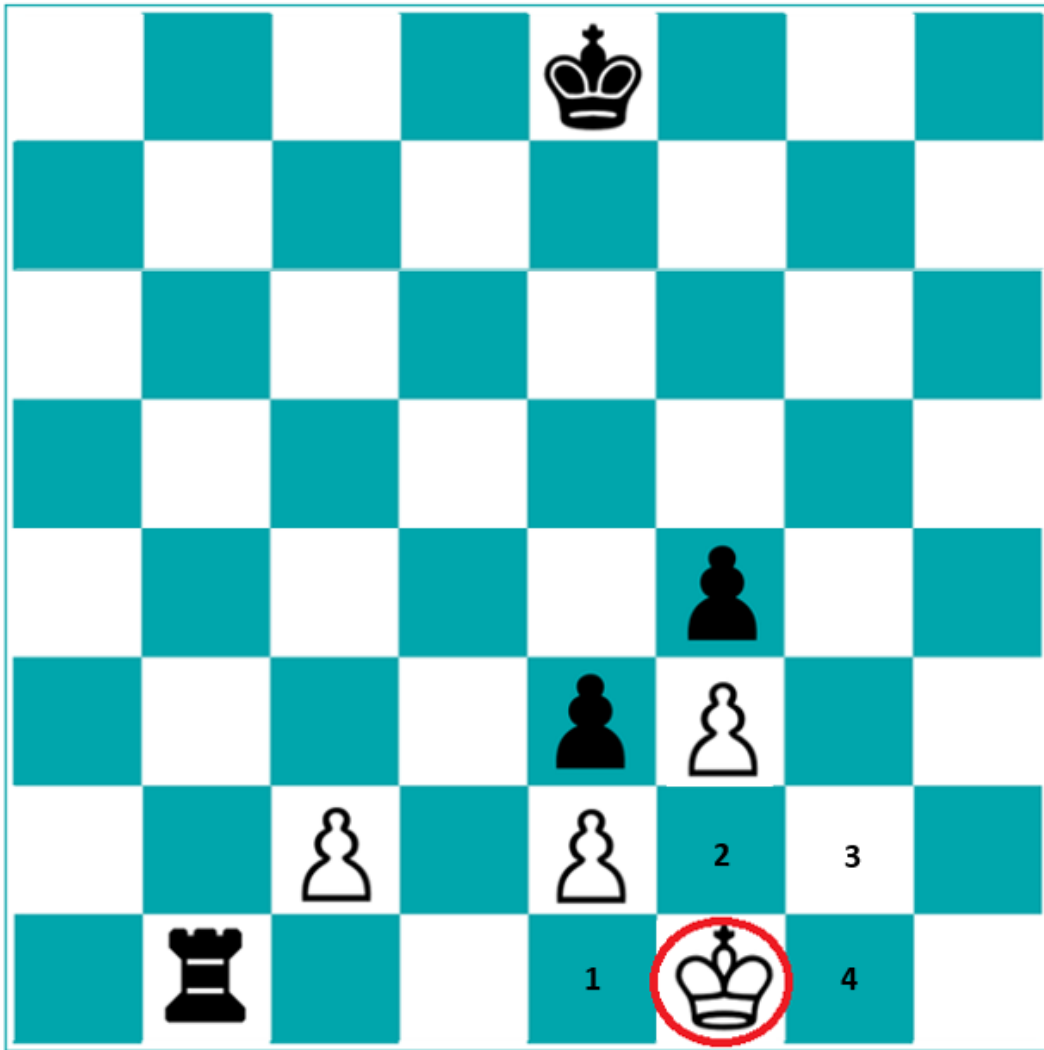


Find a way through the maze. Collect the letters on your way and make a word out of them. The word tells you where to go next.



# 2B

The white king is in danger because the rook (tower) is threatening to attack it. There is one place where it is safe, find out which one. Keep in mind that the rook can only move straight in one direction and the black pawn can only move diagonally forward. The king can move in every direction but only one space at a time.



If you found the correct number look for the right star and make a word:



# 3A/B

This lyrics is missing some letters! Write the missing letters on the lines.  
The word tells you where to go next.



Rudolph the Red-Nosed Reindeer  
Had a very shiny **n\_se**,  
And if you ever saw it,  
You would even say it glows.  
All of the other reindeer  
Used to laugh and call him names;  
They **ne\_er** let poor Rudolph  
Join in any reindeer games.



Then one foggy Christmas Eve,  
Santa came to say,  
Rudolph with your nose so bright,  
Won't you guide my **sl\_igh** tonight?



Then all the reindeer loved him  
As they shouted out with glee,  
Rudolph the Red-**\_osed** Reindeer,  
You'll go down in history.

— — — —

# 4B

Three numbers are hiding here, can you find them? After you found them match them with the letters of the alphabet (1=A, 2=B, 3=C,...). The three correct numbers give you a word.

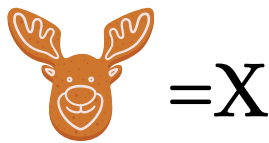
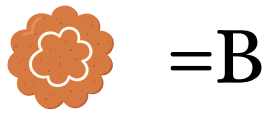
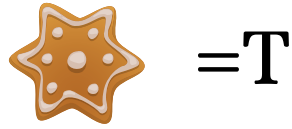


A B C D E F G H I J K L M N O P Q R S T U V W X Y Z



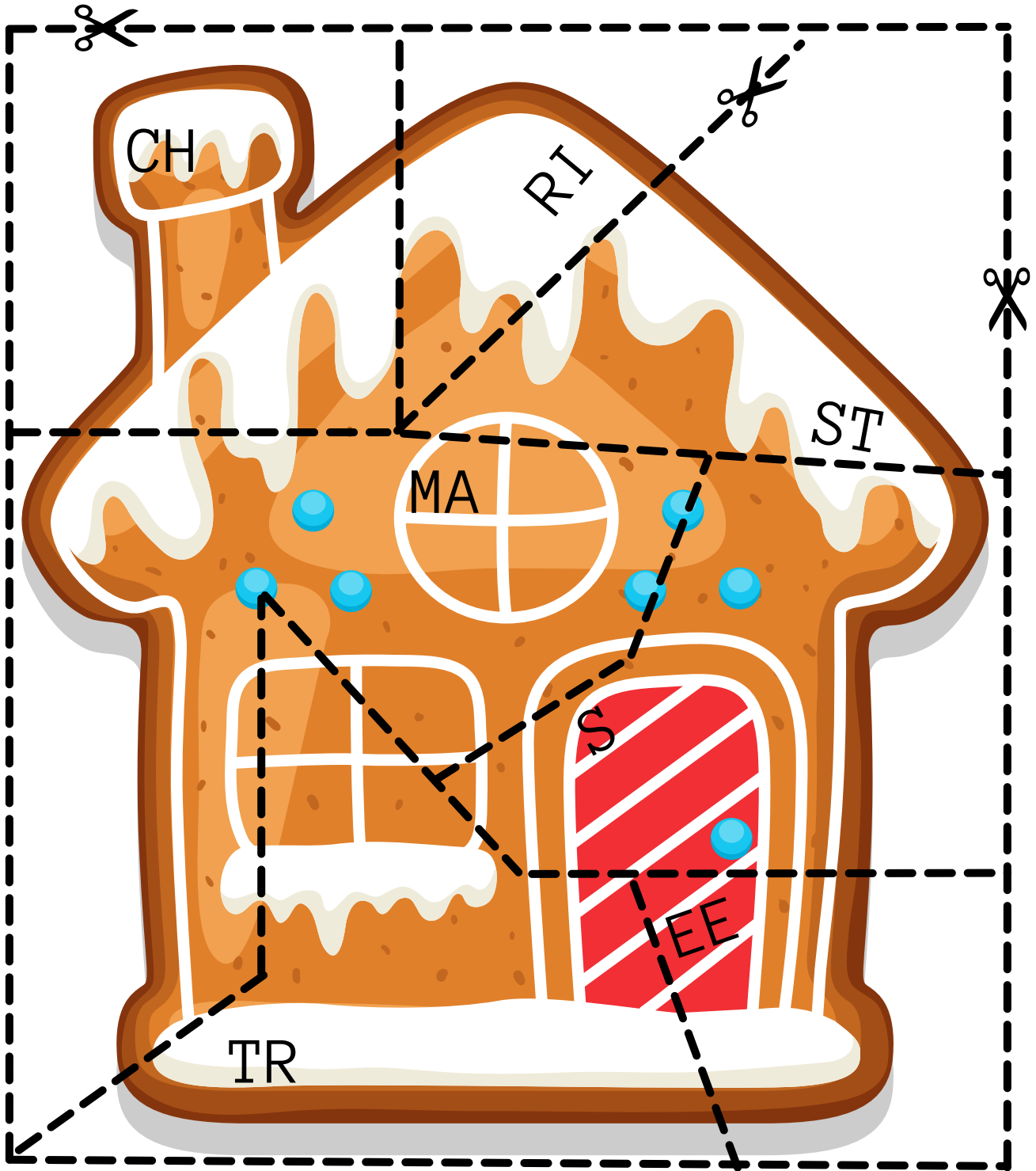
# 5B

Try to read this code.



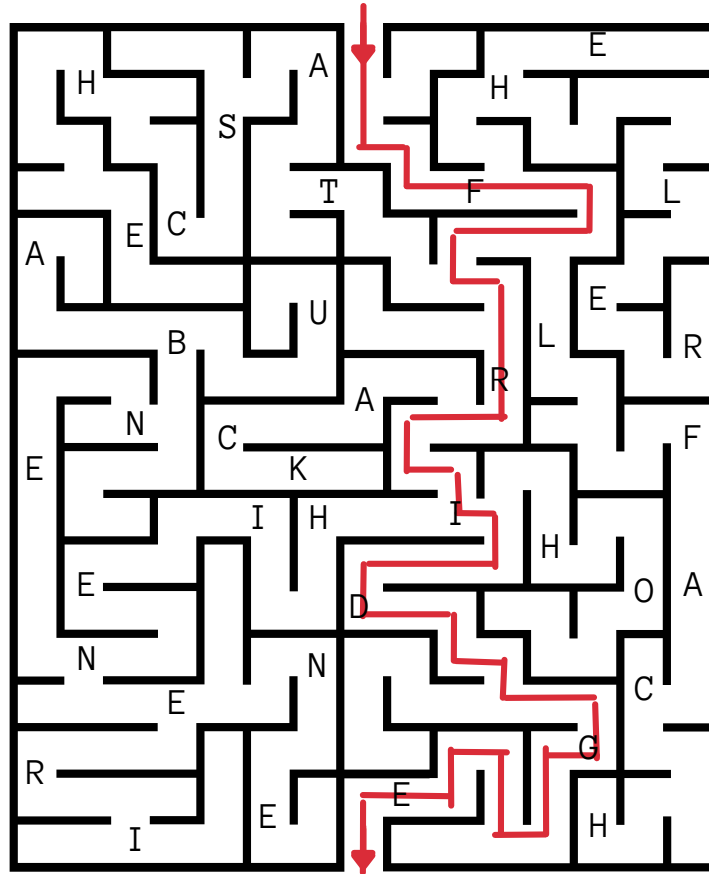
# 6B

Build the gingerbread house out of the pieces and read the letters from left to right and from top to bottom. The word tells you where to go next.



# SOLUTIONS B

## Puzzle 1: Fridge



## Puzzle 2: Washing Machine (Star 3)

## Puzzle 3: Oven

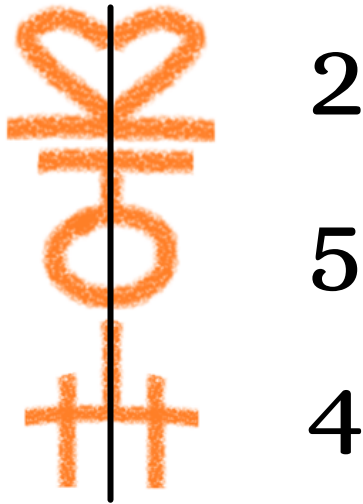
Rudolph the Red-Nosed Reindeer  
Had a very shiny **nose**,  
And if you ever saw it,  
You would even say it glows.  
All of the other reindeer  
Used to laugh and call him names;  
They **never** let poor Rudolph  
Join in any reindeer games.

Then one foggy Christmas Eve,  
Santa came to say,  
Rudolph with your nose so bright,  
Won't you guide my **sleigh** tonight?  
Then all the reindeer loved him  
As they shouted out with glee,  
Rudolph the Red-**Nosed** Reindeer,  
You'll go down in history.



# SOLUTIONS B

Puzzle 4: **Bed**

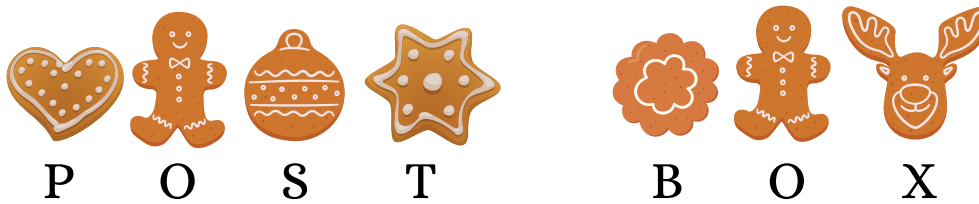


Matching letter in the alphabet: 2=B

5=E

4=D

Puzzle 5: **Postbox**



Puzzle 6: **Christmas tree** (You find the word if the pieces of the gingerbread house are assembled correctly and you read from left to right and from top to bottom.)